

Installing XenServer on VMWare Workstation 6.5

New Virtual Machine Wizard [Send Feedback](#) ✕

Select a Guest Operating System
Which operating system will be installed on this virtual machine?

Guest operating system

Microsoft Windows
 Linux
 Novell NetWare
 Sun Solaris
 Other

Version

Other 64-bit

New Virtual Machine Wizard [Send Feedback](#) ✕

Name the Virtual Machine
What name would you like to use for this virtual machine?

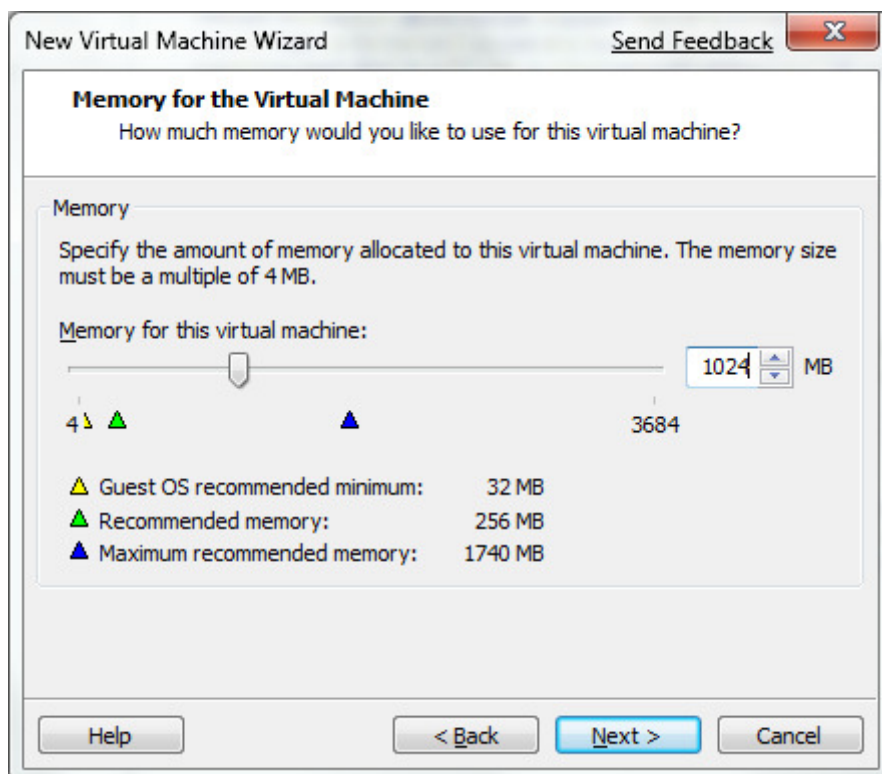
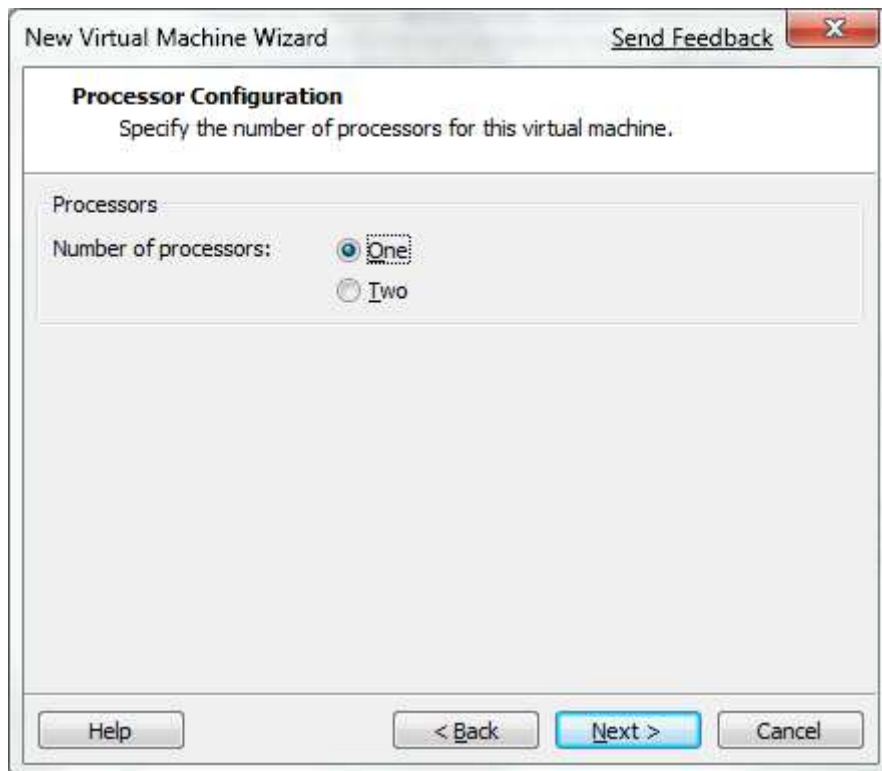
Virtual machine name

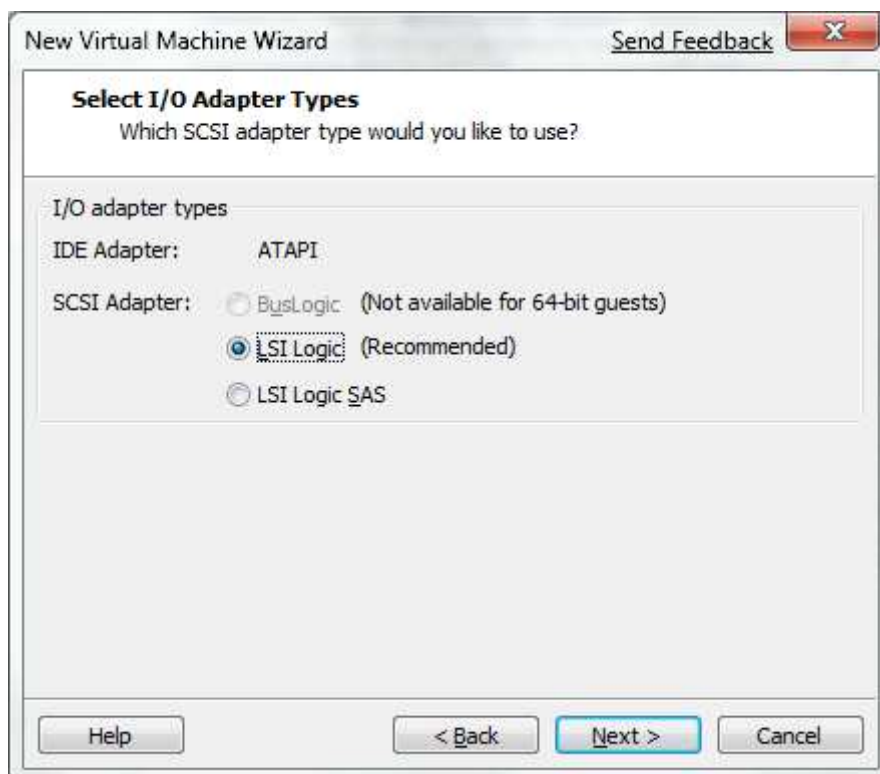
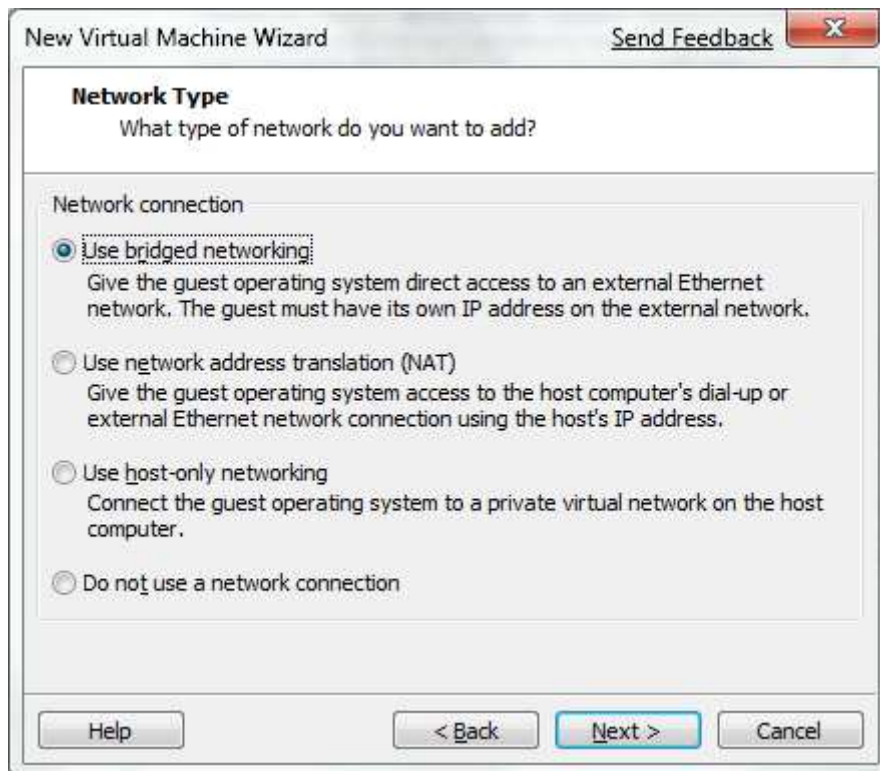
XenServer 5

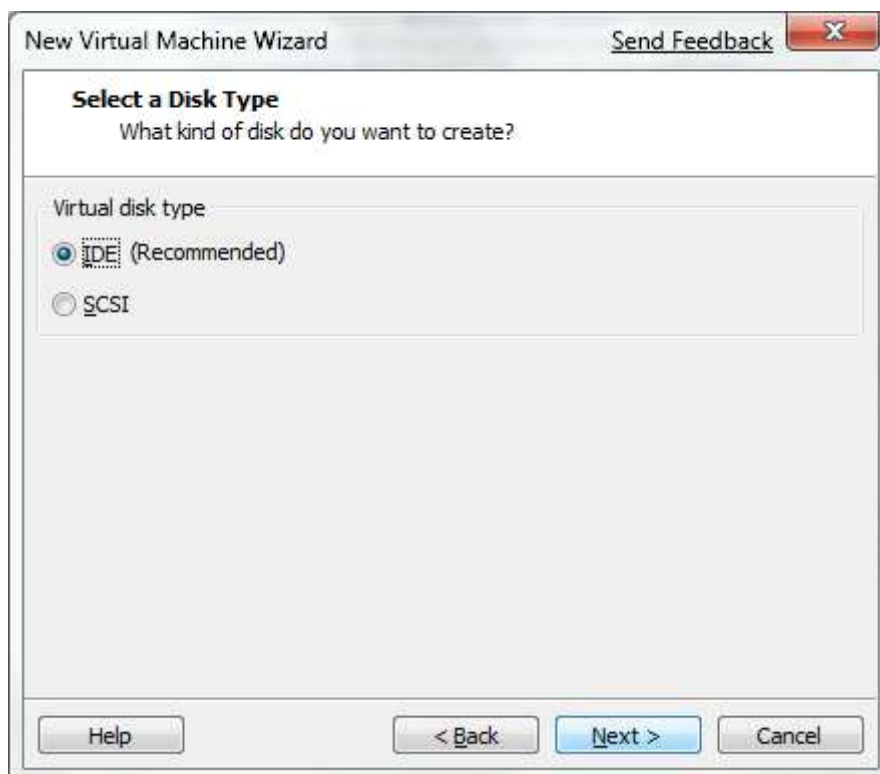
Location

C:\Virtual Machines\XenServer 5

The default location can be changed at Edit > Preferences.







New Virtual Machine Wizard Send Feedback 

Specify Disk Capacity
How large do you want this disk to be?

Maximum disk size (GB): 

Recommended size for Other 64-bit: 8 GB

Allocate all disk space now.


Allocating the full capacity can enhance performance but requires as much physical disk space as you specify for the virtual disk. If you do not allocate all disk space now, the virtual disk starts small and is created quickly. It grows as you add applications, files and data.

Store virtual disk as a single file

Split virtual disk into 2 GB files

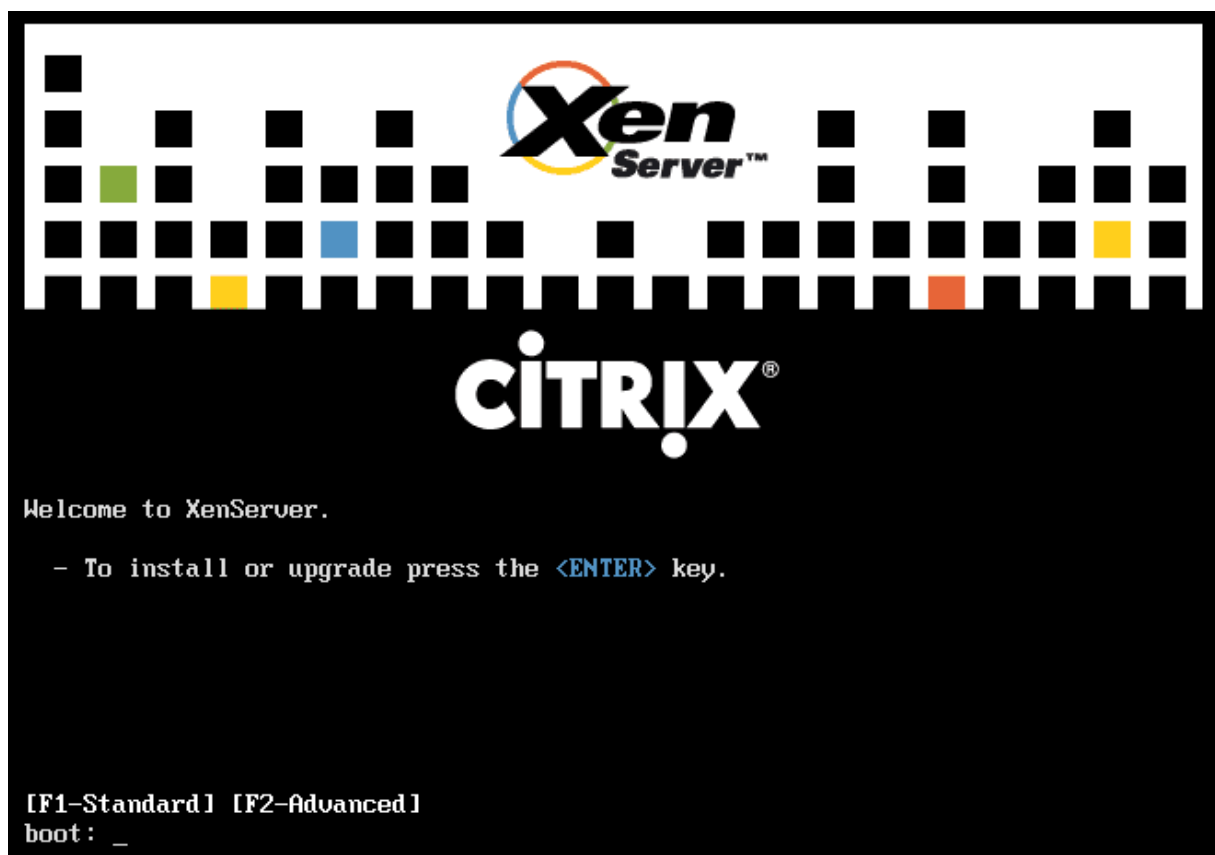
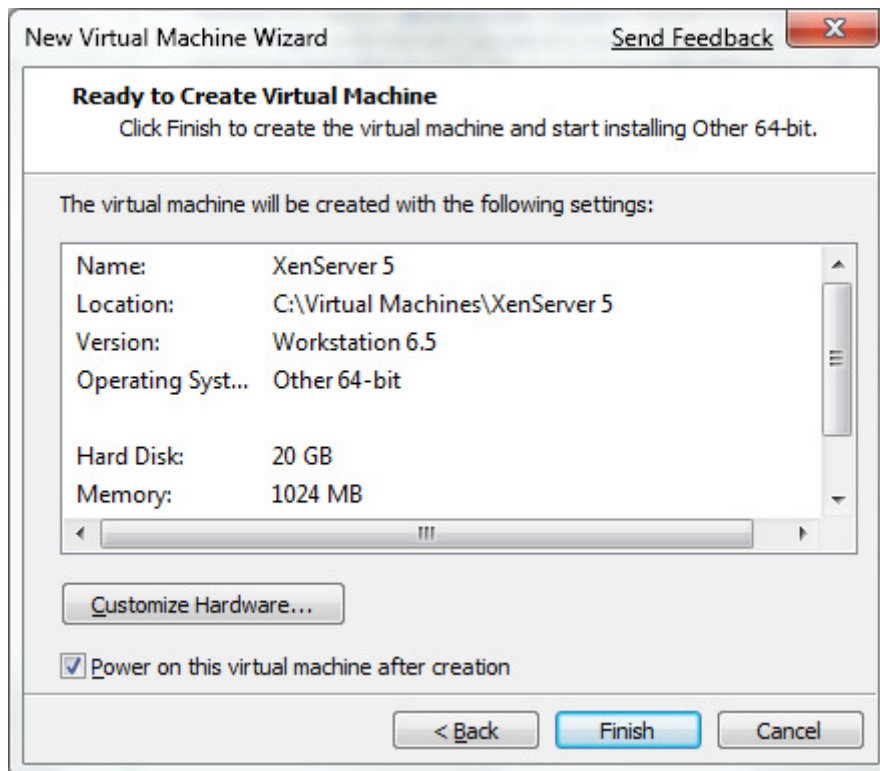
Splitting the disk makes it easier to move the virtual machine to another computer.

 [Pocket ACE size calculator](#)

New Virtual Machine Wizard Send Feedback 

Specify Disk File
Where would you like to store information about this disk?

Disk File
One 20 GB disk file will be created using the file name provided here.



Press OK

Welcome to XenServer - Version 5.0.0 (#10918p)
Copyright (c) 2008 Citrix Systems, Inc.

System Hardware

The following problem(s) were found with your hardware:

Hardware virtualization assist support is not available on this system. Either it is not present, or is disabled in the system's BIOS. This capability is required to start Windows virtual machines.

You may continue with the installation, though XenServer might have limited functionality until you have addressed these problems.

Ok

Back

<Tab>/<Alt-Tab> between elements ; <Space> selects ; <F12> next screen

Set Static IP

Welcome to XenServer - Version 5.0.0 (#10918p)
Copyright (c) 2008 Citrix Systems, Inc.

Networking

Please specify how networking should be configured for the management interface on this host.

Automatic configuration (DHCP)

Static configuration:

IP Address: 10.0.0.200
Subnet mask: 255.255.255.0
Gateway: 10.0.0.1

Ok

Back

Identify

<Tab>/<Alt-Tab> between elements ; <Space> selects ; <F12> next screen

Set Hostname and DNS Server

Welcome to XenServer - Version 5.0.0 (#10918p)
Copyright (c) 2008 Citrix Systems, Inc.

Hostname and DNS Configuration

Hostname Configuration

Hostname: xenserver5-01

DNS Configuration

DNS Server 1: 10.0.0.100

DNS Server 2: _____

DNS Server 3: _____

Ok **Back**

<Tab>/<Alt-Tab> between elements ; <Space> selects ; <F12> next screen

XenServer 5.0.0 18:44:05 xenserver5-01

Configuration

<p>Customize System</p> <p>Status Display</p> <p>Network and Management Interface Authentication Virtual Machines Disks and Storage Repositories Resource Pool Configuration XenServer Details and Licensing Hardware and BIOS Information Keyboard and Timezone Remote Service Configuration Backup, Restore and Update Technical Support Reboot or Shutdown Local Command Shell</p> <p><Enter> OK <Up/Down> Select</p>	<p>VMware, Inc. VMware Virtual Platform</p> <p>XenServer 5.0.0-10918p</p> <p>Management Network Parameters</p> <table border="0"><tr><td>Device</td><td>eth0</td></tr><tr><td>IP address</td><td>10.0.0.200</td></tr><tr><td>Netmask</td><td>255.255.255.0</td></tr><tr><td>Gateway</td><td>10.0.0.1</td></tr></table> <p>Press <Enter> to display the SSL key fingerprints for this host</p> <p><Enter> Fingerprints <F5> Refresh</p>	Device	eth0	IP address	10.0.0.200	Netmask	255.255.255.0	Gateway	10.0.0.1
Device	eth0								
IP address	10.0.0.200								
Netmask	255.255.255.0								
Gateway	10.0.0.1								

INSTALL XENCENTER ON ADMIN WORKSTATION

1. Install .NET Framework 2.x
2. Install Citrix XenCenter
3. Connect to XenServer

